

ESPON



N



European Union

Co-financed by the European Regional Development Fund



The renewed implementation logic of the ESPON 2020 Cooperation Programme

ESPON Launch Seminar
3-4 June 2015 in Jurmala



Presentation of the implementation logic

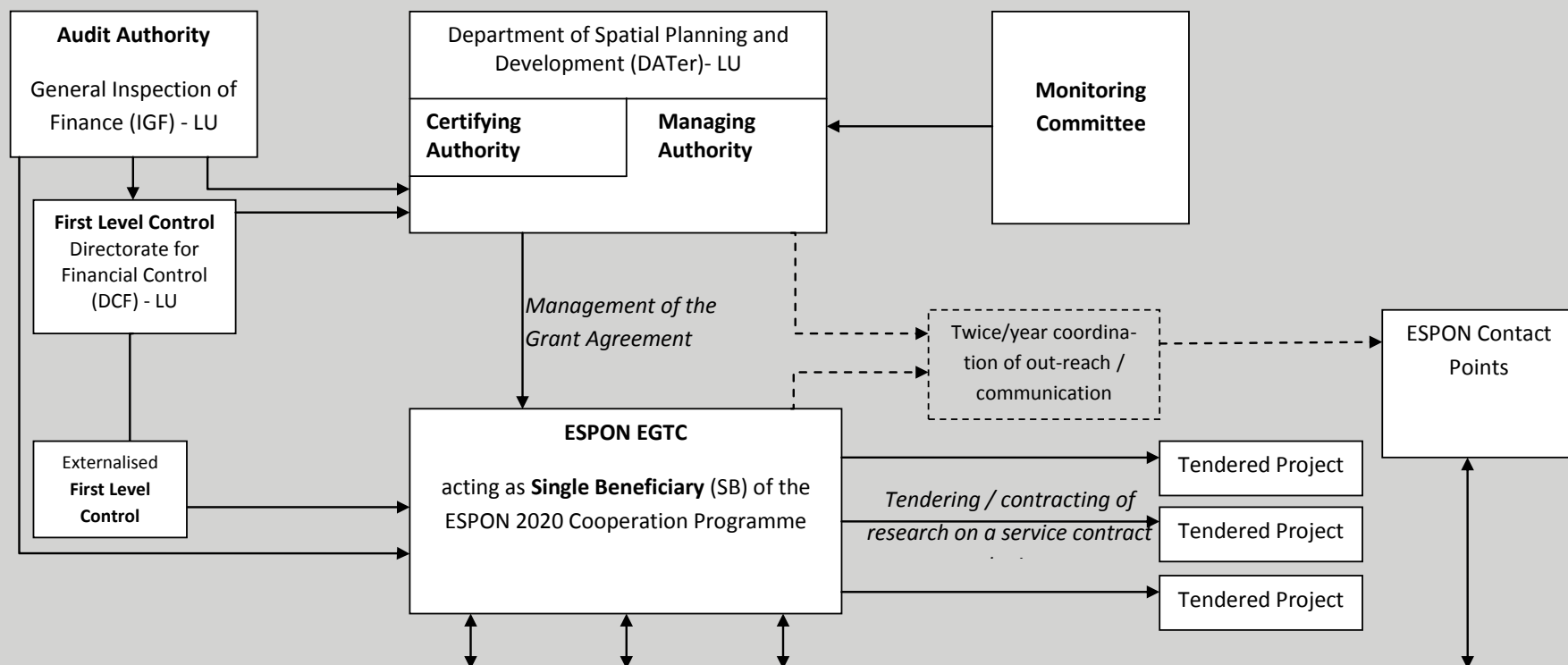
Guiding questions

- How will the ESPON 2020 Cooperation Programme be implemented?
- What is different to ESPON 2013 in the administrative set-up?
- How will stakeholders, researchers and experts be involved?

Points to address

- The new set up with Single Beneficiary, the ESPON EGTC
- Multi-Annual Work Programme and Annual Work Plans
- Contracting of services by the ESPON EGTC
- The ESPON 2020 Contact Point Network

Organisational set-up of the ESPON 2020 CP



TARGET GROUPS

Primary target groups European policymakers, National policymakers and practitioners, Authorities implementing ESI funded programmes and preparing periodical reporting, Regional and local policymakers and practitioners, cooperation in larger territories.

Secondary target groups (important receivers and users of territorial evidence), organisations promoting different regional/urban interests at EU level, university academics -researchers and students, the private sector and wider European audiences.

The ESPON EGTC

- Established to act as Single Beneficiary of the Single Operation under the ESPON 2020 CP;
- Members are Luxembourg and the 3 Belgian regions ensuring the functioning of the ESPON EGTC via the Assembly;
- Organisational structure led by the Director and two Head of Units for content related activities and Finance/Admin;
- Concentrates as Single Beneficiary the financial control related requirements on this organisation;
- Allows using public procurement and service contracts to contract services and activities.

Multiannual Work Programme and Annual Work Plans

- Operation of the ESPON EGTC based on transparent programming;
- The Operation Proposal presented by the ESPON EGTC includes the Multiannual Work Programme: discussed and approved by the MC;
- Preparation of the Annual Work Plans on the base of a consultations: discussed and approved by the MC;
- Monitoring of the progress of the Single Operation by the MC based on Annual Reports;
- Special attention to major projects by establishment of Project Support Teams.

Stakeholders, researchers and experts involvement

- Broad involvement of all Target Groups in demand surveys as part of Annual Work Plan elaboration and in feedback on achievements and use of territorial evidence;
- Stakeholders from local, regional and national authorities as well as other ESIF programmes in targeted analyses;
- Researchers and experts in applied research, targeted analyses, monitoring and tools developments in outreach activities;
- ECP institutions, if eligible, in principle in all activities as well as in the outreach cooperation envisaged.

Contracting of services by the ESPON EGTC

- The service contracting under the use public procurement is the *only way* to contract services and activities;
- Tenderers are not beneficiaries in the sense of the ESIF Regulations and in that sense not subject to financial reporting, control and audit requirements as beneficiaries;
- Firm rules for public procurements;
- Very limited flexibility in changing the content of the contracted service deliveries;
- Regular meetings on progress in many projects involving policy makers participating in Project Support Teams.

Project Support Teams

- Project Support Teams (PST) (of a limited size) can be established for all applied research activities and major projects of the monitoring and outreach;
- Are led by a senior scientist of the Single Beneficiary;
- At least one representative of the ESPON MC and one EC representative, upon interest, should together with experts from the Single Beneficiary follow and guide the implementation of the activities in order to optimise the policy relevance of the final delivery;
- The Single Beneficiary is the responsible contractor of the service, for which the PST is established, and shall - in case of different opinions within a PST - document these in the Annual Implementation Report.

Nomination and roles of ESPON Contact Points

- Nomination of ECP institutions will remain entirely at the discretion of Member and Partner States; as a consequence, the capacities of individual ECP institutions will most likely be heterogeneous;
- Act as agents in the national and transnational context to support the outreach and use of ESPON territorial evidence in accordance with the Outreach Strategy of the ESPON 2020 Cooperation Programme;
- Activate relevant policymakers, scientists and other stakeholders at trans-national, national and sub-national scales to engage with ESPON knowledge;
- Collaborate with the ESPON EGTC in the context of the Outreach Strategy, and with the MA in the sense of the Communication Strategy of the ESPON 2020 Programme.

Support to the ESPON 2020 Contact Point Network

- Support of the collaboration and coordination of European, transnational and national activities by the MA under the Technical Assistance and by the ESPON EGTC as part of the outreach strategy and will put in place mechanisms as follows:
 - Twice a year an ECP meeting where communication and outreach activities shall be coordinated (by the MA);
 - A dedicated ECP network website integrated in the ESPON website (by ESPON EGTC),
 - Further activities will be developed in the wake of implementing the Programme.

In summary

- The renewed ESPON 2020 Cooperation Programme offers
 - A matured organisational set-up;
 - A leaner and more efficient administrative organisation;
 - Financial control and audit structures in only one instead of 32 countries;
 - Less burdensome requirements for those producing ESPON evidence;
 - Regular consultation about the needs from the ESPON;
 - Improved scientific quality control and guidance regarding the usefulness of results for the policy process through PST;
 - Increased in-house capacities to deliver on demands.

The ESPON 2020 Cooperation Programme

Thank you for your attention