



Ministry of Infrastructure and the  
Environment

# Outreach to national, regional and local authorities related to Cross-border Metropolitan Development and Urban development

Daniël de Groot  
MC Member The Netherlands  
Ministry of Infrastructure and  
the Environment



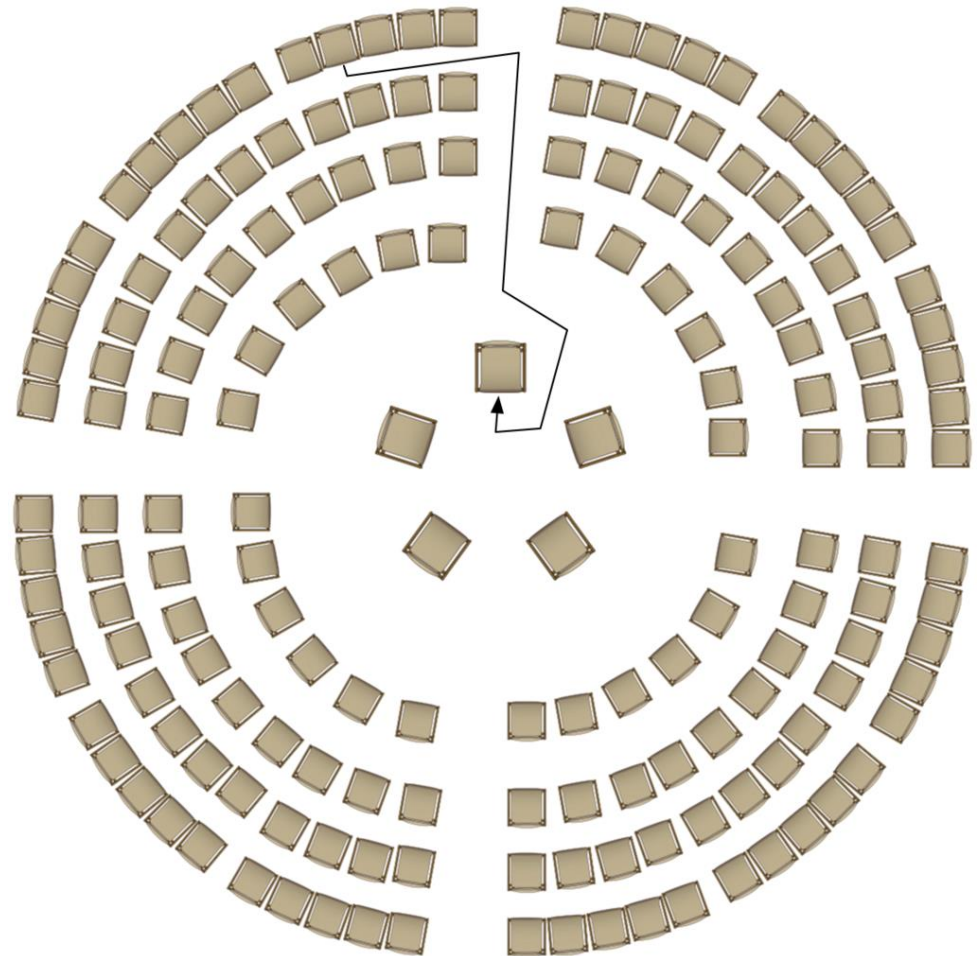
# Program for the workshop

Presentations of:

???

Myself

Fish bowl discussion





## Dutch evaluation of the ESPON 2013 programm

- Outreach of the main reports is difficult:
  - Reports are mostly too scientific and about the methods
  - Reports give benchmarks but give not enough answers to the policy questions
  - What is relevant for policy making?
  - Reaction of ESPON: ESPON Evidence Briefs



## ULYSSES project

- ULYSSES is an experimental and innovative project supported by 18 European border and cross-border areas, which aims at using applied research results from ESPON as a yardstick for decentralised cross-border spatial development planning.



## Conclusions

- Differences in the CBA seem to be pretty much a consequence of their overall location and not so much of their border position.
- Borders keep playing a major role in explaining the behaviour of the different regions
- The border condition seems to be more relevant at the regional than at the local level.
- Cross border commuting levels between different regions still tend to be low.
- Borders seem to keep functioning as a limit for the diffusion effects of development poles.



**LANDSCHAPSBELEID VOOR**

**HET DRIELANDENPARK**

**LANDSCHAFTSPOLITIK FÜR**

**DEN DREILÄNDERPARK**

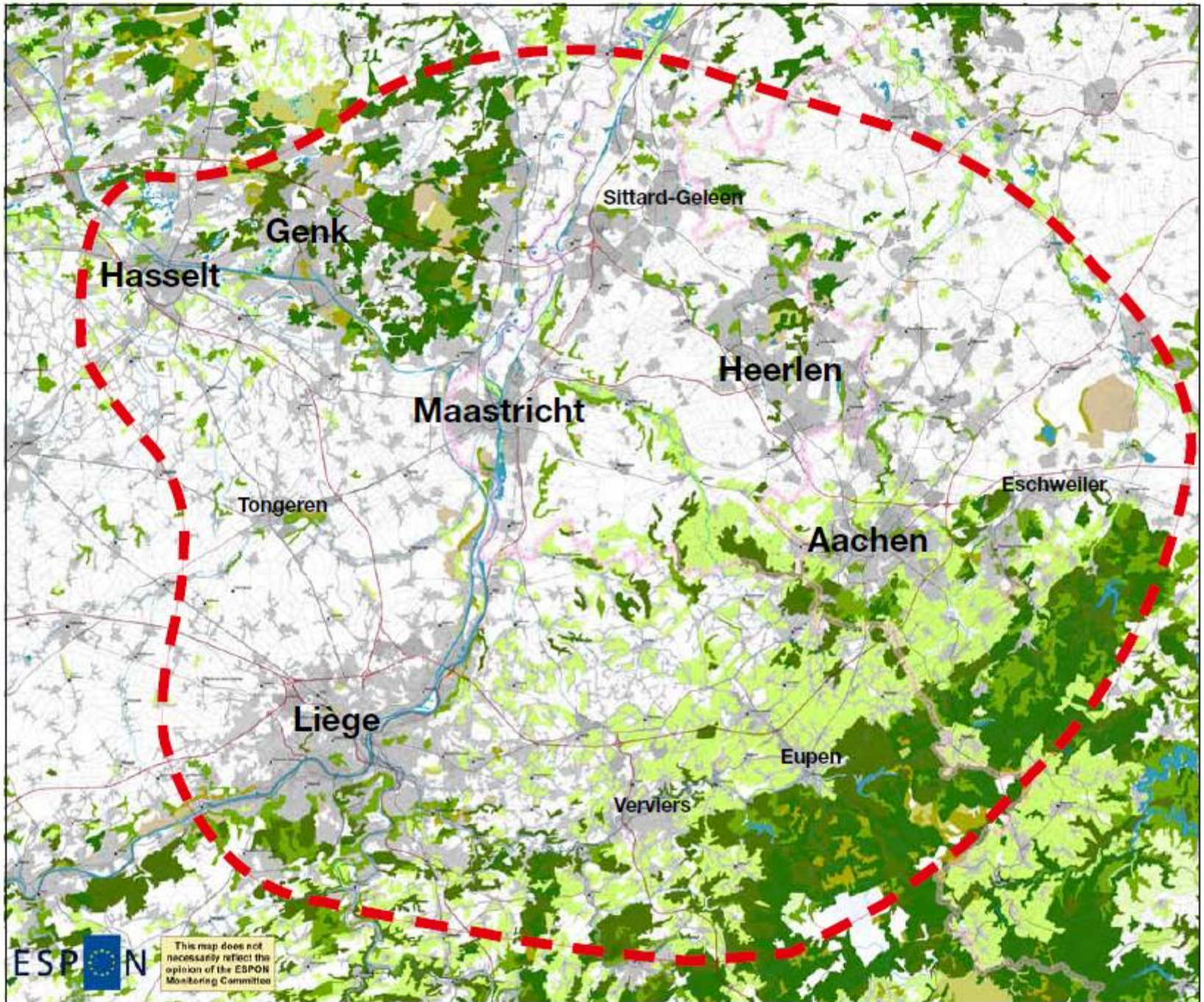
**UNE POLITIQUE PAYSANNE**

**GÈRE POUR LE PARC DE**

**TROIS PAYS LANDSCAPE**

**POLICY FOR THE THREE**

**COUNTRIES PARK**





## The Final report

- *The final report reflects sufficiently the complex situation of the 3CP Region in the European and the (tri-) national contexts, acknowledges the pitfalls and opportunities in transnational cooperation, and provides us with sufficient orientations for the future. (leadpartner Province of Limburg, The Netherlands)*





## Beyond the LP3LP project

- Inspiring starting points for policy use and further elaboration at relevant policymaking levels in the field of landscape policy and spatial planning.
- Results will be now implemented on the regional level.



## Coalition agreement for the provincial council of Limburg

- In realizing the Netherlands Nature Network we develop strong connections with ecologically valuable areas in the Belgian-German border, with a matching wildlife management.



## Publication for a broader public (ESPON for dummies)

- A four- language illustrated summary for the general public. (Title: "Landschapsbeleid voor het Drielandenpark / Landschaftspolitik für den Dreiländerpark / Une politique paysagère pour le Parc des Trois Pays/ Landscape Policy for the Three Countries Park").
- Download the report on:

[www.drielandenpark.eu](http://www.drielandenpark.eu)



## Starting Chairs

Carsten Jahn Hansen

Associate Professor in Spatial Planning

Department of Planning, Aalborg University

Sabine Stölb

MC Member Luxembourg

Ministère du Développement durable et des Infrastructures



## Fish Bowl Discussion

- How has ESPON territorial evidence supported policy development?
- Was ESPON support in targeted analyses and workshops a positive contribution?
- Did analytical ESPON tools make a difference?
- Possible use of evidence today and tomorrow at national, regional and local level