



Tarkett Sustainability & Eco-Innovation



THE ULTIMATE FLOORING EXPERIENCE



Tarkett Group

 **Tarkett**
THE ULTIMATE FLOORING EXPERIENCE

Tarkett in figures

2.5 € net sales

Sales in more than
100 countries

11,000
employees

1.3
million m²
sold per day

30
Production sites

25
R&I Center & Labs
3 Design Centers





Tarkett, Global Leader in Innovative Flooring and Sports Surface Solutions



Vinyl



Linoleum

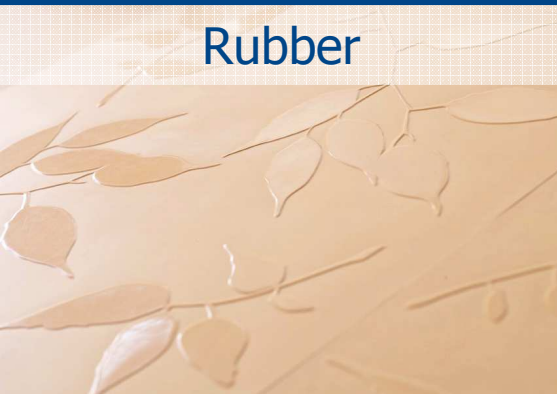


Wood



Laminate

ONE OF THE BROADEST PRODUCT PORTFOLIOS



Rubber



Carpet



Artificial Turf



Tracks



Tarkett, Global Leader in Innovative Flooring and Sports Surface Solutions



Housing

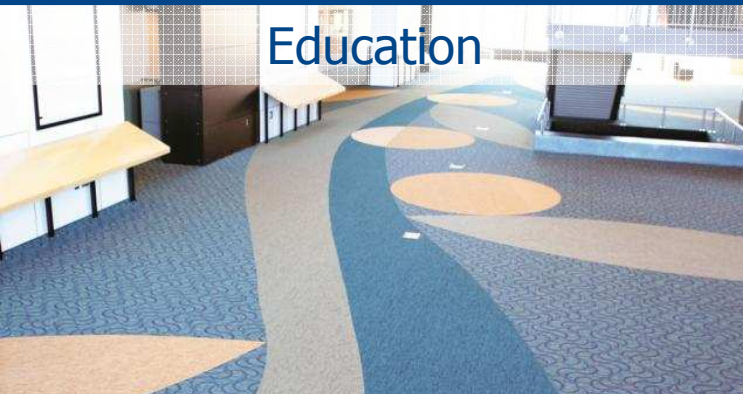


Healthcare



Retail & Hospitality

FLOORING EXPERTISE IN EVERY MARKET SEGMENT



Education



Offices



Sports





Sustainability in Action @ Tarkett



THE ULTIMATE FLOORING EXPERIENCE

9 Bn people by 2050...

WASTE

EMISSIONS

CONSUMPTION

WELL-BEING

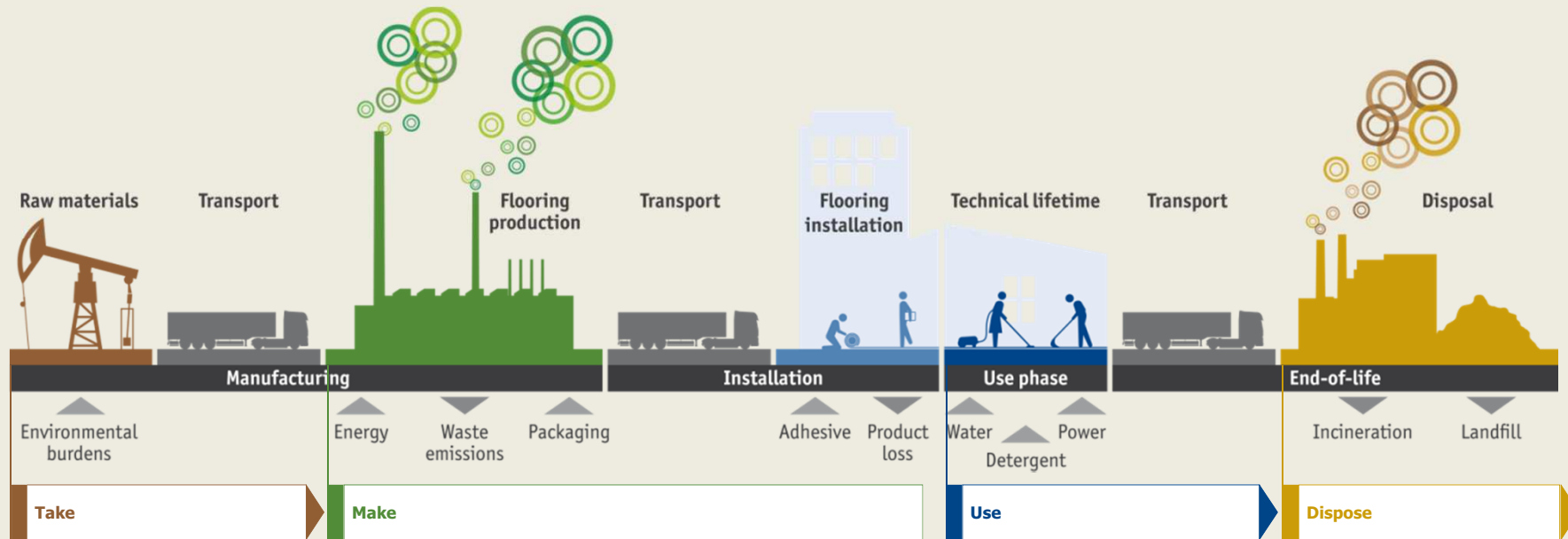
RESOURCE SCARCITY

Requiring **new thinking**
for a **Sustainable Future**



Look forward

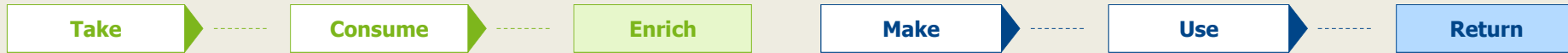
From the Past Linear Economy...



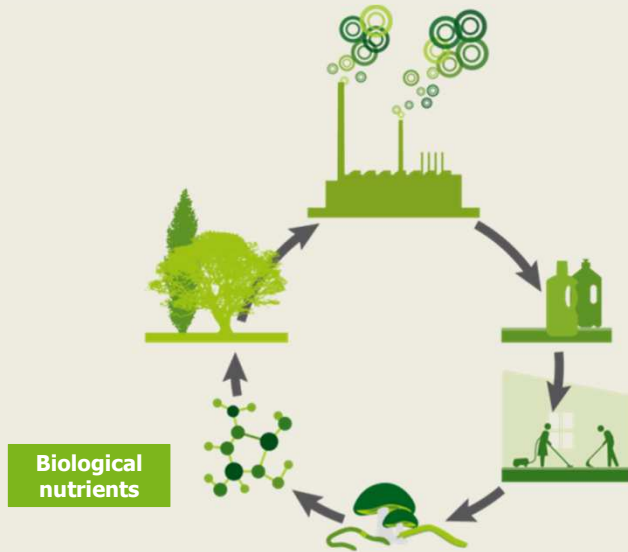


Look forward

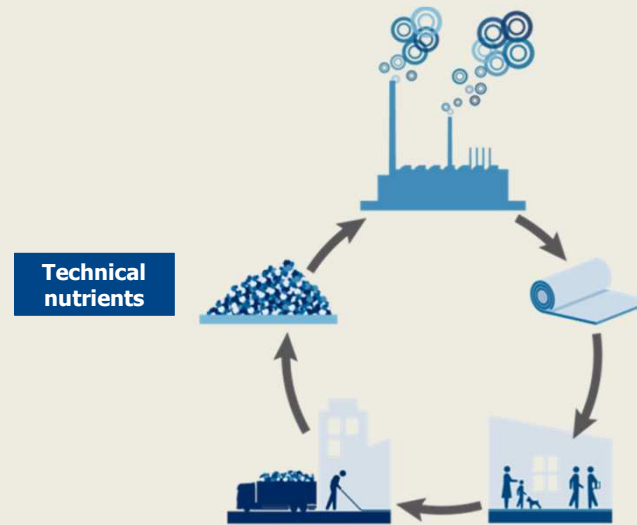
... To a Circular Economy



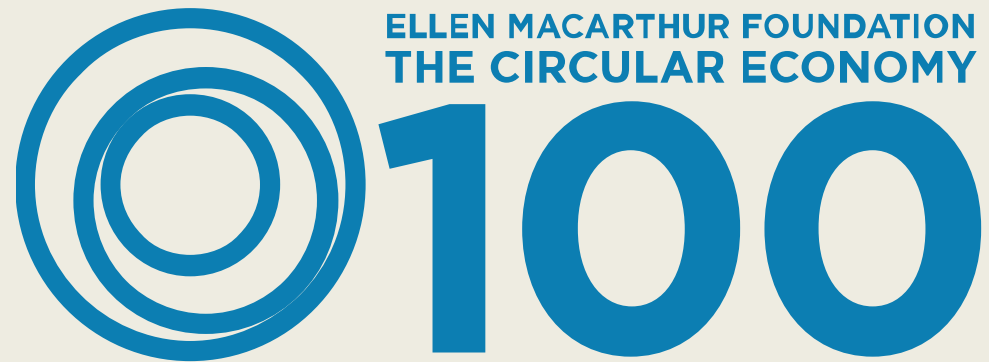
BIOLOGICAL CYCLE



TECHNICAL CYCLE



 We Believe in...



Sustainability by Closed-Loop Circular Design

Design our products for reuse according to Cradle to Cradle principles and with a "minimized impact" on the environment

At each step of product's life

The recycling at end-of-use to eliminate waste and to design new products with good materials

The well-being and health of the people during product use and maintenance

The choice of good materials in the design of the products

The responsible use of resources in our operations





GOLD

Linoleum





Biomass Energy Closed-Loop Water Circuits





*except recycled content



*TVOC at 28 days



Recycle & ReUse





Recycle

Tarkett Environmental Initiative

& REUSE





Transform Good Intentions into...

ENGAGEMENT

INNOVATION

EXECUTION

Meaningful Actions & Tangible Results





Thank You

